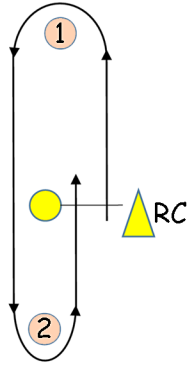
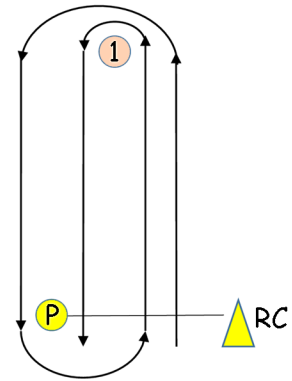


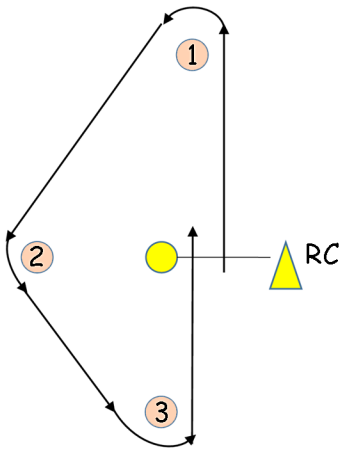
WL – Windward / Leeward, to Finish
 Mark Rounding Order
 Start – 1 – 2 – Finish



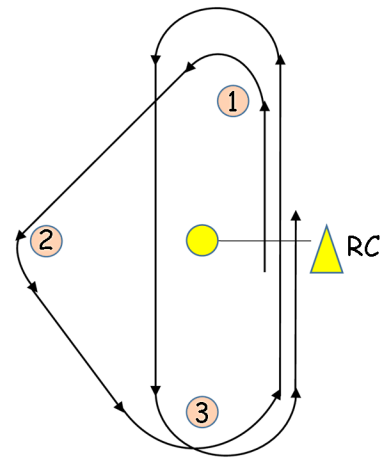
WL Twice Around – Windward / Leeward / Windward, to Finish
 Mark Rounding Order
 Start – 1 – P – 1 – Finish
 Shortened course at P will be between P and RC



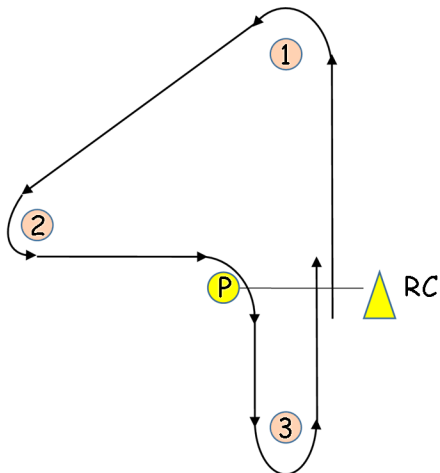
Modified Triangle – Triangle, to Finish
 Mark Rounding Order
 Start – 1 – 2 – 3 – Finish



Modified Gold Cup – Triangle/Windward/Leeward, to Finish
 Mark Rounding Order
 Start – 1 – 2 – 3 – 1 – 2 – Finish



Harry Anderson – Windward / Reach / Reach / Leeward, to Finish
 Mark Rounding Order
 Start – 1 – 2 – P – 3 – Finish
 mark P left to starboard



No-Gybe – Windward / Reach / Windward / Reach to Finish
 Mark Rounding Order
 Start – 1 – 2 – 3 – Finish
 marks 2 and 3 left to starboard

